

146

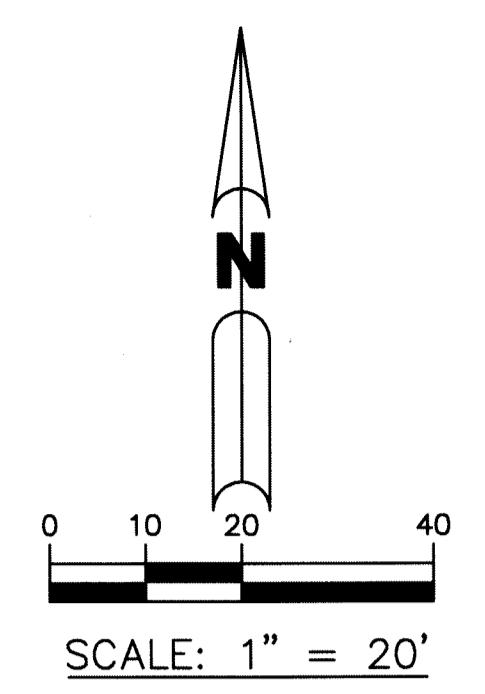
LEGEND:
ABBREVIATIONS:
 ORB - OFFICIAL RECORD BOOK
 D.B. - DEED BOOK
 P.B. - PLAT BOOK
 NO. - NUMBER
 PG. - PAGE
 R/W - RIGHT-OF-WAY
 SEC. - SECTION
 C - CENTERLINE
 NAD - NORTH AMERICAN DATUM
 FND - FOUND

LB - LICENSED BUSINESS
 (P) - PLAT DIMENSION
 22/44/43 - SECTION 22, TOWNSHIP 44 SOUTH, RANGE 43 EAST
 U.E. - UTILITY EASEMENT
 A.E. - ACCESS EASEMENT
 D.E. - DRAINAGE EASEMENT
 S.E. - SIDEWALK EASEMENT
 P.S.M. - PROFESSIONAL SURVEYOR & MAPPER
 MND - MAG NAIL & DISK, STAMPED AS NOTED

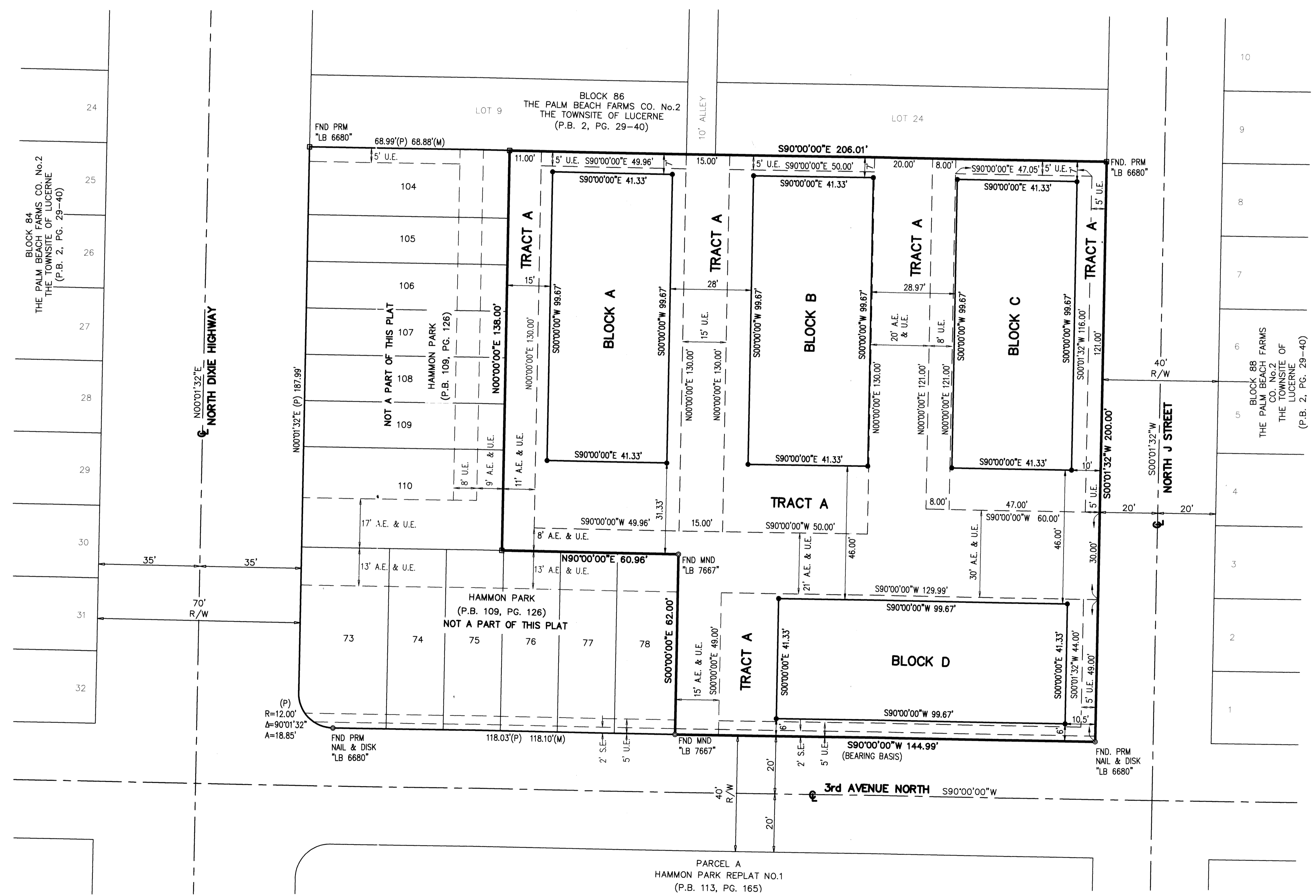
AVIARA ON THE AVE

BEING A REPLAT OF LOTS 79 THROUGH 103, INCLUSIVE, AND TRACT "B", HAMMON PARK, ACCORDING TO THE PLAT THEREOF, AS RECORDED IN PLAT BOOK 109, PAGE 126, PUBLIC RECORDS OF PALM BEACH COUNTY, FLORIDA, LYING IN SECTION 22, TOWNSHIP 44 SOUTH, RANGE 43 EAST, CITY OF LAKE WORTH BEACH, PALM BEACH COUNTY, FLORIDA

SHEET 2 OF 2



SYMBOLS:
 □ PERMANENT REFERENCE MONUMENT (P.R.M.), SET 4"x4" CONCRETE MONUMENT WITH DISK STAMPED "LB6473", UNLESS NOTED OTHERWISE
 ● MONUMENT, SET 1/2" IRON ROD WITH "BROWN & PHILLIPS" CAP



PREPARING SURVEYOR & MAPPER'S STATEMENT
 THIS INSTRUMENT WAS PREPARED BY
BROWN & PHILLIPS, INC.
 JOHN E. PHILLIPS III, P.S.M. 4826
 CERTIFICATE OF AUTHORIZATION # LB 6473
 1860 OLD OKEECHOBEE RD., SUITE 509
 WEST PALM BEACH, FLORIDA 33409
 561-615-3988, 615-3986 FAX